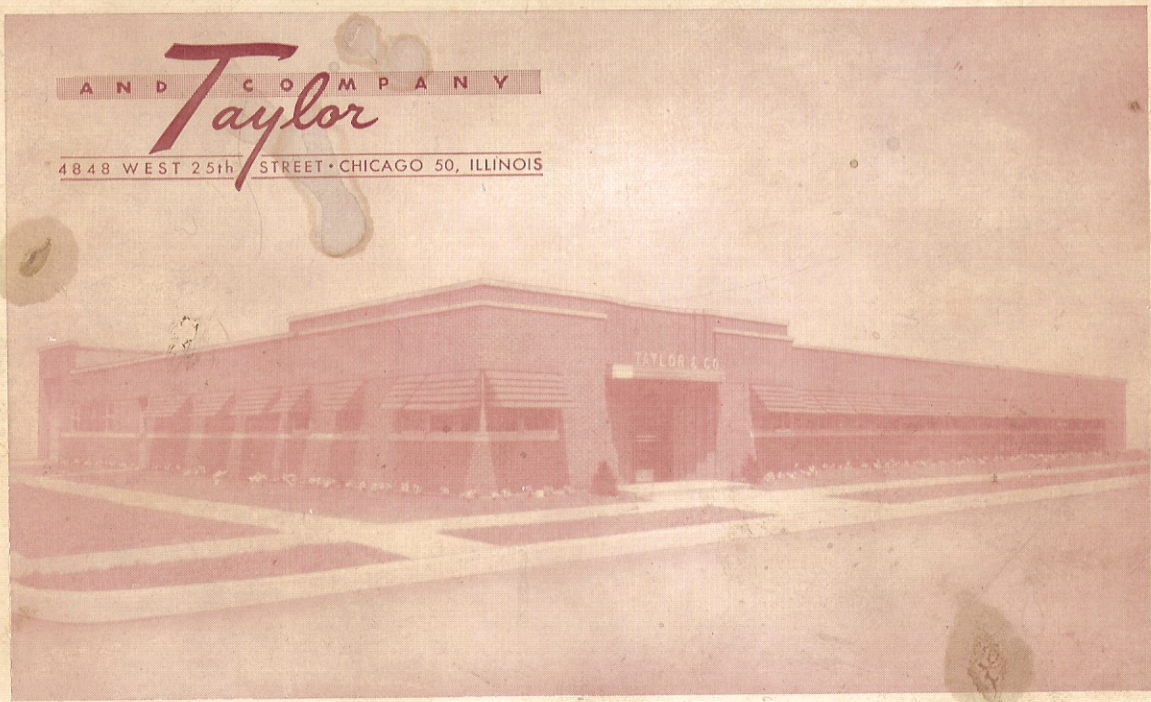


*Handwritten signature*

R. J. ANSANI

AND *Taylor* COMPANY  
4848 WEST 25th STREET • CHICAGO 50, ILLINOIS



R. J. ANSANI

170  
2/4

- CHECKS
- DICE
- LAYOUTS
- BINGO
- LAYOUTS
- DICE
- HOLES
- BINGO
- TABLE
- 156"
- TABLE
- TABLE



A N D C O M P A N Y  
*Taylor*

4848 WEST 25th STREET • CHICAGO 50, ILLINOIS



W 9/5

## Taylor-Made Clubroom and Casino Equipment

"There will always be a difference in the quality and workmanship of casino equipment."

Taylor & Company make only the best precision-made equipment—double checked and unreservedly guaranteed to perform the service for which it is intended. Because of our experience and volume, our price policy is such that we invite competition.

Our equipment is designed and manufactured in our own plant by craftsmen who have had years of training in this particular line. Every shipment leaving our plant is thoroughly inspected and is sold with a guarantee of satisfaction or money refunded.

Taylor & Company kindly asks the purchaser to study the following pages of this catalog carefully and to compare quality and prices with competitive equipment—before making a choice.

Sincerely,

**TAYLOR & COMPANY**

Address  
4848 W. 25th St.  
Chicago 50, Illinois

Telephone  
LAwndale, 1-6121

## TAYLOR'S FAST DELIVERY SERVICE

Orders received up to 12 Noon will be shipped the same day and will be delivered the following day when air service is available. All rush orders are sent air-express, limited to weight. Larger shipments can be made by Railway Express.

Crates and packing boxes for our equipment are made of quality wood, sturdily constructed, joined together with screws to withstand all weather conditions, and to maintain material free from dust and dirt, to afford easy access to the contents and so designed that containers can be used for reshipping purposes.

TAYLOR - WAY IS THE FASTEST AND SAFEST WAY

---

TAYLOR AND COMPANY — 4848 W. 25th STREET — Telephone LAWndale 1-6121 — CHICAGO 50, ILLINOIS

---





## TAYLOR - MADE PRECISION DICE

We manufacture absolutely **Perfect Dice** which are unequalled in hardness, perfection and wearing quality and are accurate to the 1/10,000th of an inch. Our dice department and laboratory are under supervision of the ablest dicemen in the country. These dice are guaranteed in every respect. Our special process is your assurance of quality and is the secret of our success. Materials are carefully selected, tempered and trued by experts. The prosperity of club rooms depends essentially on **perfect dice**.

No monograms will be duplicated except for the original purchaser.

### EDGES

- No. 1 Razor Edge  
 No. 2 Very Light Turned 6 M wide  
 No. 3 Medium Light Turned 9 M wide

- No. 4 Medium Heavy Turned 12 M wide  
 No. 5 Medium Heavy Turned 15 M wide  
 No. 6 Heavy Turned 18 M wide

FLUSH  
SPOT

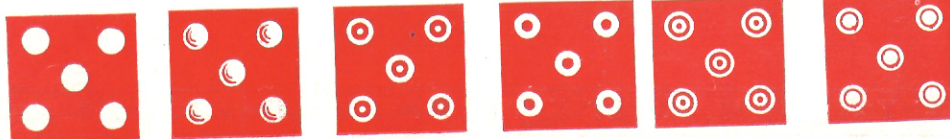
CONCAVE  
SPOT

BIRD EYE  
SPOT

RING EYE  
SPOT

DOUBLE  
RING  
EYE SPOT

SPECIAL  
BIRD EYE  
SPOT



MONOGRAMS  
STYLE 5



STYLE 6



STYLE 7



STYLE 8



STYLE 9



MONOGRAMS  
STYLE 10

## TAYLOR-MADE PRECISION CHUCK DICE



Taylor's Perfect Chuck Dice are based on A-1 workmanship, guaranteed to be accurate to 1/10,000th of an inch and will remain absolutely square due to Taylor's supreme method of hardening, giving a wearing quality equaled by none.



Size 1 or 1 1/4 inch, concave spot

Catalog No. 220-D

7.50

Size 1 1/4 inch, Tri-color Red, Black and Blue, inlaid spot

Catalog No. 221-D

7.50

Size 1 inch or 1 1/4 inch, Flush spot

Catalog No. 222-D

7.50

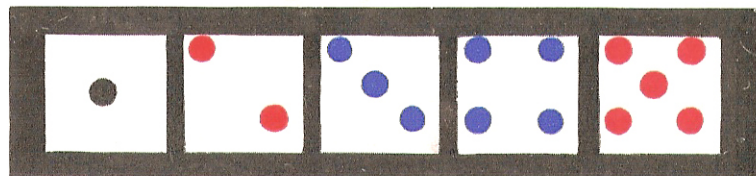
“(For prices, refer to PRICE LIST in front of catalog)”

TAYLOR AND COMPANY — 4848 W. 25th STREET — Telephone LAwndale 1-6121 — CHICAGO 50, ILLINOIS



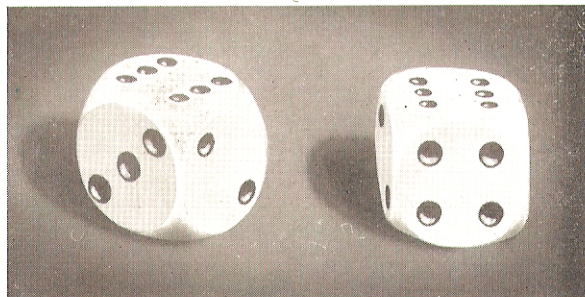
## Taylor-Made Inlaid Tri-colored Spot Counter Game Dice

These dice are used for all counter games, especially twenty-six, etc., and are stocked in various sizes.  $\frac{5}{8}$  and  $\frac{11}{16}$  inches are the most popular. Our experts make these dice with our secret process of hardening, inserting the red, blue and black spots flush with the surface, absolutely guaranteed not to come out. All our dice are thoroughly seasoned, trued and inspected for accuracy. True percentage is yours when using Taylor-Made precision dice. - - - - -



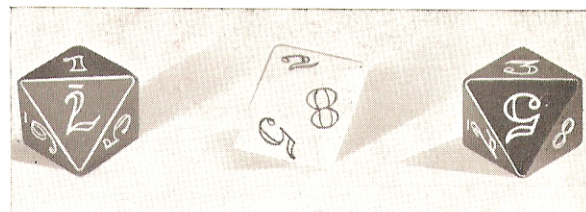
-Inlaid Spot - - - per -  $\frac{2.00}{1.25}$  Catalog No. 223-D  
Concave Painted Spot " - - - " -  $\frac{2.00}{1.25}$  Catalog No. 224-D

## Taylor-Made Barabout Dice



Taylor's Perfect Ball Barabout Dice designed and manufactured to be within  $\frac{1}{10,000}$ th of an inch, all sides are perfect circles, having no corners, concave spot in any color. <sup>3.00</sup>  
Sizes of  $\frac{5}{8}$ ",  $\frac{11}{16}$ " or  $\frac{3}{4}$ ". - - - - - Catalog No. 225-D ~~2.50~~  
Poker Dice, Standard size, Ace to Nine Catalog No. 227-D <sup>2.50</sup>

## Octagon Baseball Pool Dice



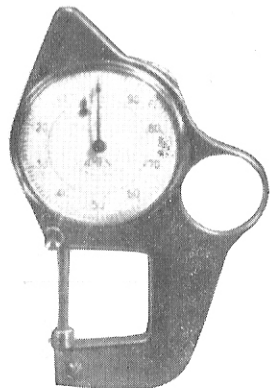
These are the Genuine Taylor's Baseball Pool Dice, octagon shaped and each dice is a different color. One is red, one white and the other blue, with deeply engraved numerals in white on the red and blue dice and in black on the white dice. - - - - - Catalog No. 226-D <sup>5.00</sup>

“(For prices, refer to PRICE LIST in front of catalog)”

TAYLOR AND COMPANY — 4848 W. 25th STREET — Telephone LAWndale 1-6121 — CHICAGO 50, ILLINOIS

# TAYLOR DICE MEASURING INSTRUMENTS

## Dial Micrometer and Snap Gauge

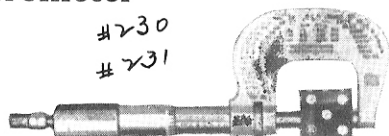


An accurate pocket gauge that reads like a watch. This quick reading dial "mike" measures very accurately to 1/1,000th of an inch. It is very compact, light in weight, and attractively finished. - - Catalog No. 228-M

75.00

## Micrometer

A hardened steel tool, made with a ratchet and lock nut, showing measurements to the 1/1,000 of an inch. - - - - -



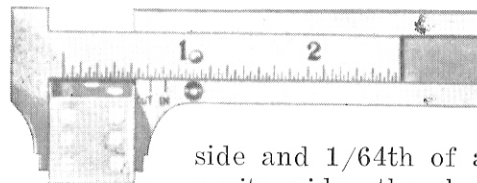
Catalog No. 416-M

18.00

72.50

"(For prices, refer to PRICE LIST in front of catalog)"

## Pocket Slide Caliper

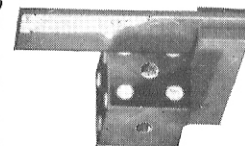


A convenient pocket caliper showing variations of 1/32nd of an inch on one side and 1/64th of an inch on the opposite side, thereby enabling you to measure any size dice more rapidly. Catalog No. 229-M

8.00

## Pocket Square

The pocket square is used to determine the squareness of dice. Set the square on the dice diagonally from corner to corner as illustrated, and then on all sides. Vest pocket squares. - - - - -



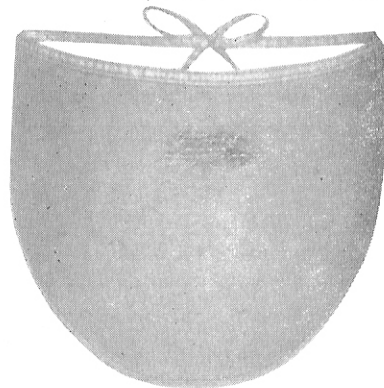
Catalog No. 231-M

4.50

7.50



1/252 = Club name on NU cloth \$1.00 ea.  
 "Billiard" 1.50 ea.  
 NO NAME on NU cloth - 1.00



## TAYLOR'S CLUBROOM SUPPLIES

### Dealers' Aprons

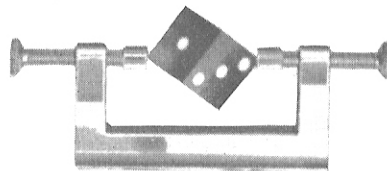
Dealers' aprons of high grade drill cloth. A protection for the table as well as the dealer's clothing.

Catalog No. 232-M <sup>1.50</sup>

Dealers' aprons of high grade billiard cloth.

Catalog No. 233-M <sup>1.50</sup>

### Balancing Caliper



A fast and accurate tool used in determining a weighted dice regardless of how the weight might be. Chromium plated.

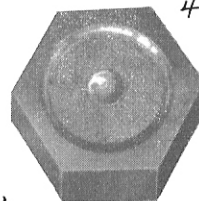
Catalog No. 234-M

<sup>4.50</sup>

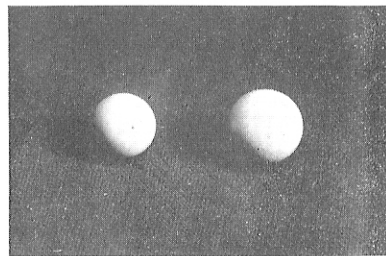
### Composition Markers

The ideal marker for your check bettors. Made of composition and available in black. - Catalog No. 240-M

Red or black — 5.00 per C



### Roulette Balls



Roulette Balls, various sizes. Ivory.

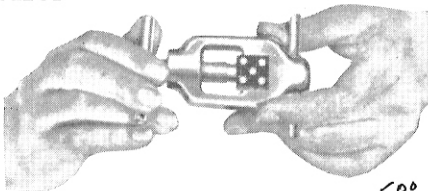
Catalog No. 238-M <sup>3.50</sup>

Roulette Balls, various sizes. Composition. <sup>2.75</sup>

Catalog No. 239-M <sup>2.75</sup>

### Monogram Cancellor

A practical tool for cancelling monograms, initials, or marks on dice when given away to players, so as to prevent dice from being used in the game at another time. Chrome plated.



<sup>1.50</sup>

Catalog No. 235-M

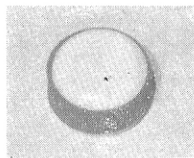
### Dice Bucks

Plastic dice bucks used for pegging a player's point. Rubber bound for added protection of dice.

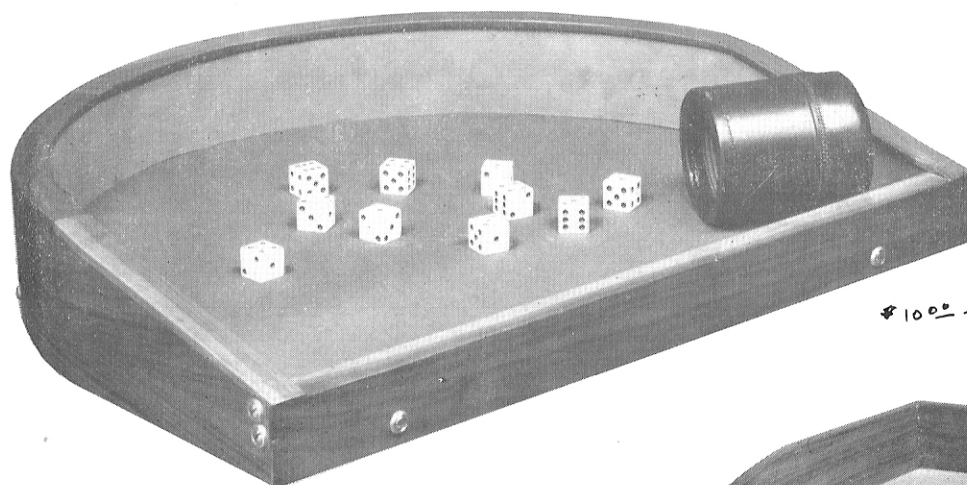
Catalog No. 236-M

<sup>2.25</sup>

"(For prices, refer to PRICE LIST in front of catalog)", <sup>2.25</sup> *Heavy Comp. (on's) @ 3.25*



## TAYLOR-MADE COUNTER DICE BOARDS



Taylor's Horseshoe Type Counter Dice Board can be used for all counter games, made up of Genuine American Black Walnut, beautifully finished; sides lined with green sponge rubber, bottom is heavily padded and covered with green billiard cloth, guaranteed not to warp or crack. Standard size 18"x24".

21.00

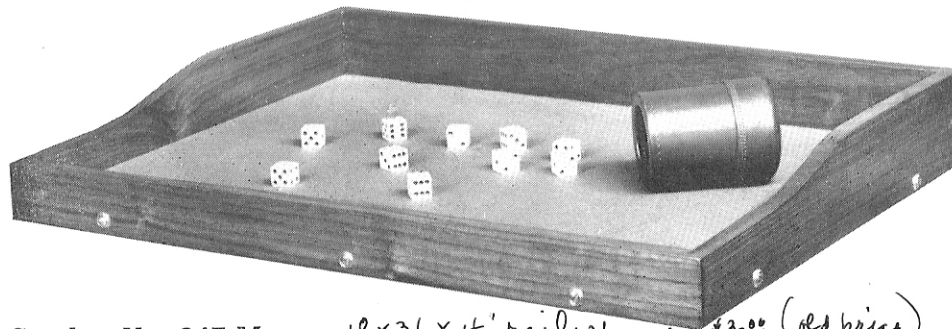
Catalog No. 243-F

Set of Ten Perfect Dice, inlaid with red, blue and black, sizes  $\frac{5}{8}$ " or  $\frac{11}{16}$ " with any monogram. - Catalog No. 223-D

\$10.00 →

Large Size Dice Box. Catalog No. 245-M 4.50

Taylor's Square Type counter dice board also used for all counter games. Substantially constructed with a lustrous walnut finish, is heavily padded and covered with green billiard cloth. Standard size 18"x24". ~~12.00~~ Catalog No. 246-F



Medium Size Dice Box. - - - 4.00 Catalog No. 247-M

18x36x4" rail sponge \$30.00 (old price)

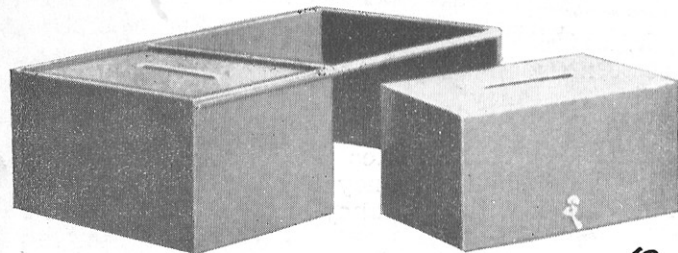
We are equipped to manufacture boards of any given specifications. If any item that you want is not shown in this catalog write to us for further details.

“(For prices, refer to PRICE LIST in front of catalog)”

TAYLOR AND COMPANY — 4848 W. 25th STREET — Telephone LAwndale 1-6121 — CHICAGO 50, ILLINOIS



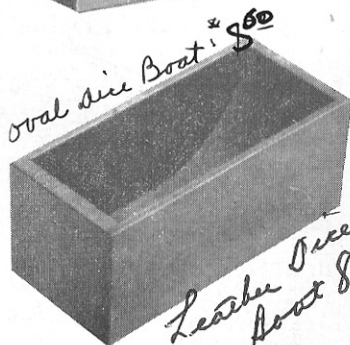
# TAYLOR-MADE TABLE EQUIPMENT



## DICE HOLDER

Dice Holder made of solid walnut, beautifully finished, lined with billiard cloth. Sloping ends make it easy to pick up dice. Size 8"x4"x3",

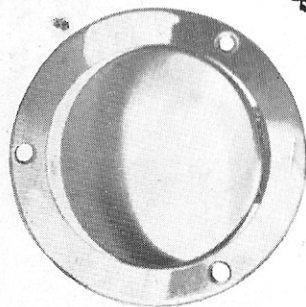
Catalog No. 262-F  
4.00



## LARGE ROUND BILL SLOT

Chromium plated brass bill slot with over-all diameter of 4 1/2". Has a center lid 3" in diameter with positive spring action. Used on tables equipped with money drawers.

10.00 Catalog No. 263-M



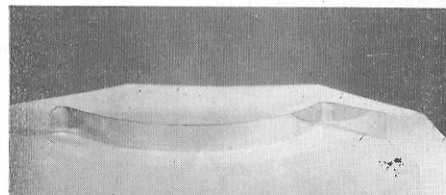
## SECURITY MONEY DRAWER

Designed to fit regulation tables containing a removable money box with bill slot. Made very strong, and offers full protection.

Money Drawer complete - - - Catalog No. 258-F 34.00  
Money Box only (6 1/8 x 7 3/8 x 1 3/4) - - - Catalog No. 259-F 13.00  
" " locked - 5 1/2 x 7 1/2 x 10" - - - " " 237-F 17.00

## CHECK RIM

Roulette Metal Check Rim, Chromium plated for single dealer table, used to protect wheel from being marred.

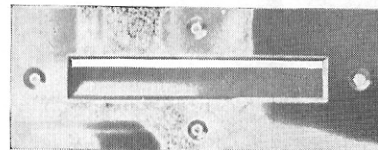


Catalog No. 260-M 15.00

Roulette Metal Check Rim Chromium plated for double dealer table - - - - - Catalog No. 261-M 22.00

## OBLONG BILL SLOT

Chromium plated brass oblong bill slot used for dice tables, black-jack tables, etc. Spring action is positive.



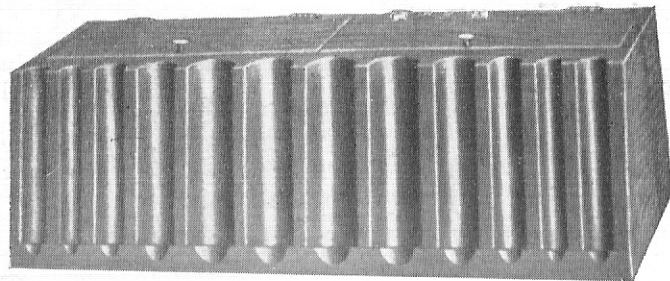
Oblong Bill Slot, 6-inch - - - Catalog No. 264-M 5.00

Oblong Bill Slot, 8-inch - - - Catalog No. 265-M 6.00

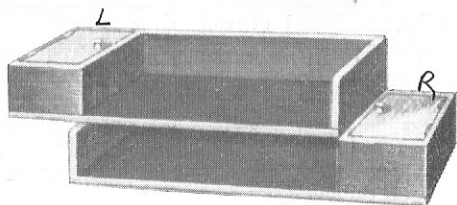
" " " - 5 1/2" without flip - - - 4.00

"(For prices, refer to PRICE LIST in front of catalog)"

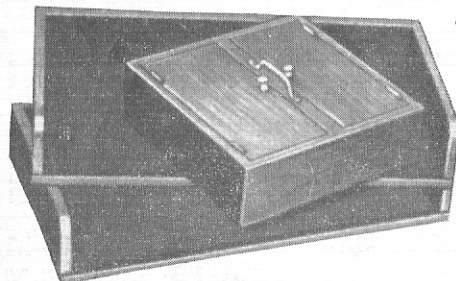
# TAYLOR-MADE CHECK RACKS AND MONEY BOXES



Taylor's solid walnut left or right hand check rack with money compartment, 22"x9"x3".



Left Hand Rack. Catalog No. 269-F - 13.00  
Right Hand Rack. Catalog No. 270-F 13.00



*check rack money box and 19.50*  
Taylor's solid walnut double money box and plain check rack lined with green billiard cloth.

Check Rack, size 18 1/2"x9 1/2"x3" Catalog No. 274-F 9.00  
Double Money Box, size 8"x9"x3" Catalog No. 275-F 13.00  
Single Money Box, size 8"x5"x3" Catalog No. A275-F 6.00

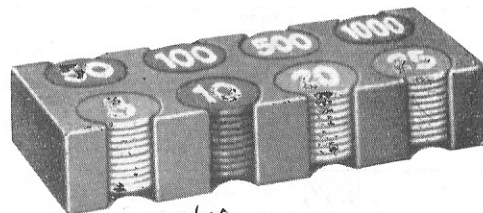
## WESTERN STYLE MONEY RACK

Taylor's Western style money rack and currency box made of black walnut. Money racks are made with spaces for any assortment of silver or checks desired.

Money Rack with currency boxes <sup>35.00</sup> Catalog No. 266-F 35.00  
Money Rack with locked currency box " No. 267-F 45.00  
Upright Money Rack without money box " No. 268-F 18.00

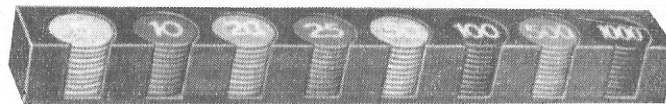
## Roulette Marker Rack and Markers

The rack is made of genuine black American walnut, edges and corners rounded. Handles very easily.



Standard six hole marker rack <sup>6.00</sup> Catalog No. 271-F  
Standard eight hole marker rack Catalog No. 272-F 7.00  
Markers furnished in eight different colors, in figures from 5 to 1000 - - Catalog No. 273-C 1.00

## DICE MARKER RACK



Made of solid Walnut to hold 80 markers.  
Rack only - - - - - 7.00 - Catalog No. 276-F  
Inlaid numbered markers, set of 80. Catalog No. 277-C 12.00

"(For prices, refer to PRICE LIST in front of catalog)"