

TAYLOR - MADE CASINO TABLE



Our standard Casino Table is 36" wide, 72" long and 37" high and is suitable for Chuck Luck as well as Casino play. This table is sturdily constructed of Genuine Walnut. The top is padded and covered with Green Billiard Cloth. It is fitted with Security Drawer and removable cash box with lock. The massive appearance

insures attractiveness. It is put together with six chromium plated hand screws which make it easy to set up or take down. We can also furnish a double end table designed for two layouts, using one cage in the center. The size of this double end table is 36" wide, 96" long and 37" high.

Taylor's Casino Cage Table, padded and covered with Green Billiard cloth - - - ^{275⁰⁰} **Catalog No. 374-F**
Hand Painted Chuck Layout, Imported Simonis cloth, 18"x40".

^{37¹⁰} **Catalog No. 724-DCL**
Mounted on Panel Board

^{11⁴⁰} **Catalog No. 331-F**
Laydown Money Rack

^{8⁰⁰} **Catalog No. 396-F**

^{72²⁰} **Catalog No. 256-M**

^{7¹⁰} **Catalog No. 314-M**

^{440⁰⁰} **Catalog No. 375-F**

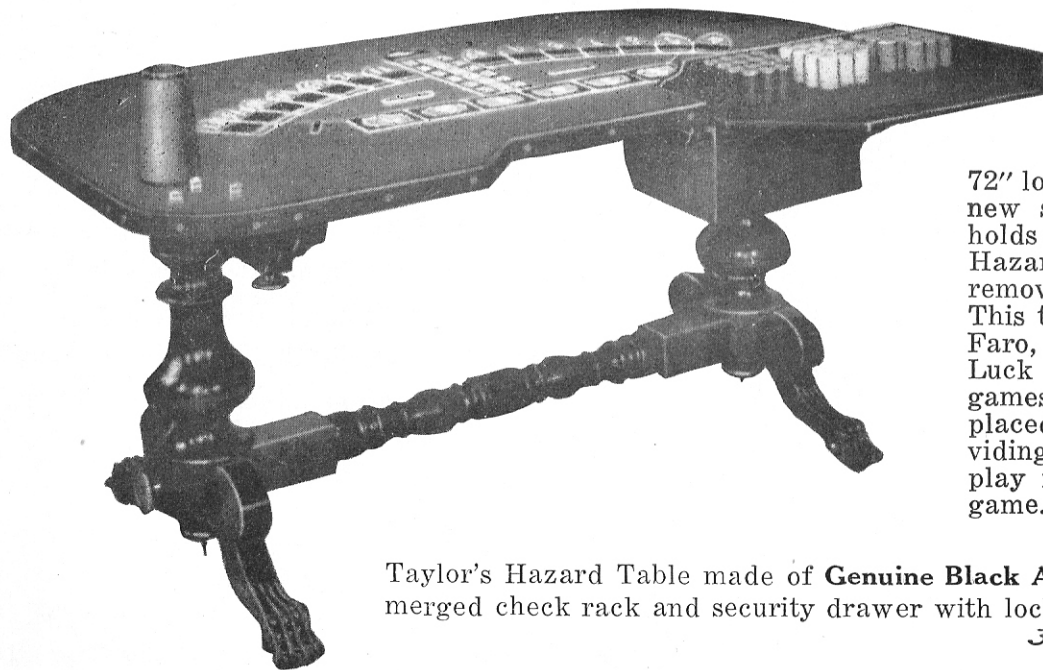
¹⁵⁰⁰ **Cat #314MD**

No. 2 Chuck Cage - - - - -
Rubberized Dust-Proof or Moisture-Proof Cover
Double End Casino Cage Table, padded and covered
with green cloth - - - - -

"(For prices, refer to PRICE LIST in front of catalog)"

TAYLOR AND COMPANY — 4848 W. 25th STREET — Telephone LAwndale 1-6121 — CHICAGO 50, ILLINOIS

TAYLOR - MADE HAZARD TABLE



Taylor's Hazard Table is of the same sturdy and massive construction as our other Casino Tables, the size being 42" wide, 72" long, 34" high. It is equipped with the new style submerged check rack which holds 2000 checks. A feature of this Hazard Table is the security drawer with removable cash box equipped with lock. This table can be used for such games as Faro, Klondike, Red and Black and Chuck Luck by merely using layouts for these games mounted on panels which can be placed on top of the table, thereby providing a variety of games in the event the play is not heavy on any one particular game.

Taylor's Hazard Table made of **Genuine Black American Walnut** with submerged check rack and security drawer with locked money box.

325⁰⁰ Catalog No. 376-F

Taylor's Hazard Layout, Hand Painted on Imported Simonis Cloth	- - - - -	125 ⁰⁰	- - -	Catalog No. 726-DHL
Taylor's Hazard Layout, Hand Painted on Enamel Cloth	- - - - -	62 ⁵⁰	- - -	Catalog No. 726-HEL
Rubberized Dust-Proof or Moisture-Proof Cover	- - - - -	7 ⁵⁰	- - -	Catalog No. 315-M

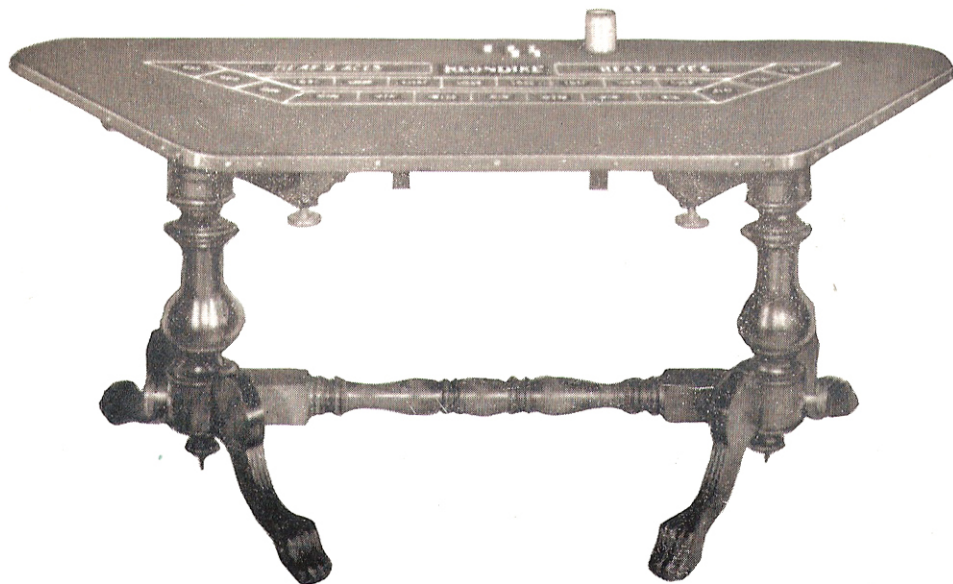
Refer to page 10 for Cage sizes.

See Dice sizes shown on page 4.

For prices see front of catalog.

TAYLOR AND COMPANY — 4848 W. 25th STREET — Telephone LAwndale 1-6121 — CHICAGO 50, ILLINOIS

TAYLOR - MADE KLONDIKE TABLE



Taylor's Standard Klondike Table is constructed of Genuine American Black Walnut with a quadrangular top eight feet long at the back and tapers toward the front. The height is 39". An attractive handpainted Klondike layout on Imported Simonis Cloth adds grandeur to this ideal Casino table. Fitted with a Security Money Drawer with lock and keys.

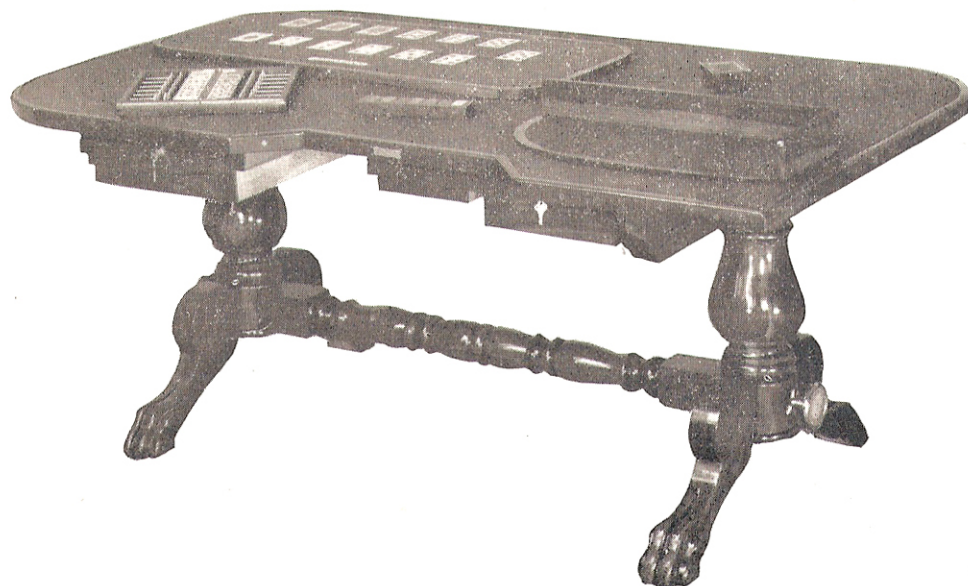
Discontinued

Klondike Table, padded, only with Security Drawer and locked money box - - - 275⁰⁰ - Catalog No. 378-F
 Klondike Layout, hand painted on Imported Simonis Cloth with "Win and Lose", size 48" x 98" Cat. No. 742-DKL 125⁰⁰
 Klondike Layout on Taylor's Duro Enamel Cloth with "Win and Lose", size 48" x 98" 62⁵⁰ - Catalog No. 743-KEL
 Rubberized Dust-Proof and Moisture-Proof Cover - - - - - 7⁵⁰ - Catalog No. 316-M

"(For prices, refer to PRICE LIST in front of catalog)"

TAYLOR AND COMPANY — 4848 W. 25th STREET — Telephone LAwndale 1-6121 — CHICAGO 50, ILLINOIS

TAYLOR-MADE FARO TABLE



Taylor's Regulation Faro Table is standard in every respect, being 42x72x30 inches high. The top is padded and covered with a very high grade billiard cloth. Special drawers for currency, silver and other playing equipment are outstanding features of this table. Additional space is provided to the right of the dealer for the round front Faro Check Rack.

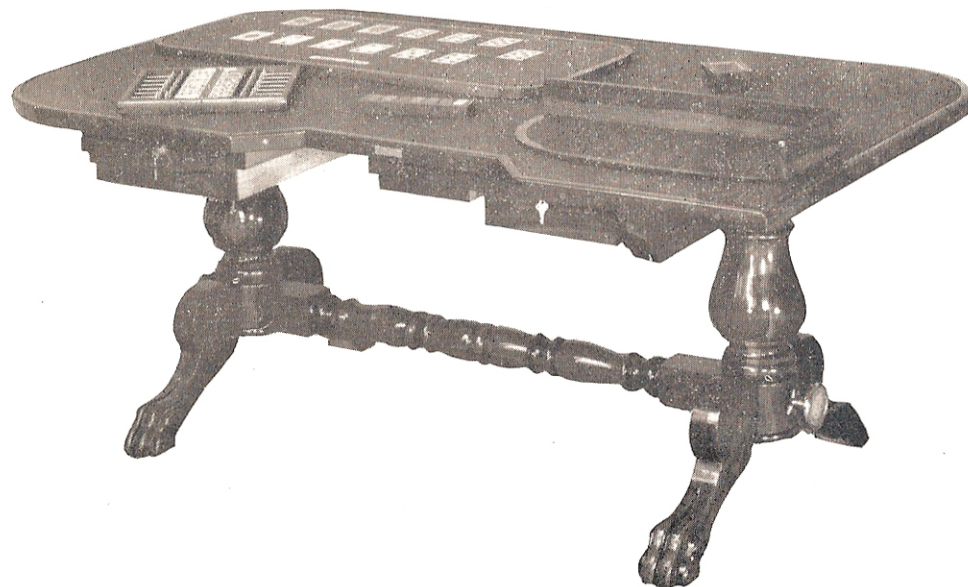
Faro Table padded and covered with billiard cloth including Faro layout mounted on board, Faro Case Keeper, Faro Dealing Box chromium plated, and 2000-size Faro Check Rack, marker rack, markers and Dustproof Cover.

Faro Table padded and covered with billiard cloth	- - - - -	425.00	Catalog No. 379-F
Faro Layout, hand painted on Imported Simonis Cloth	- - - - -	275.00	Catalog No. 380-F
Faro Fold-up Board	- - - - -	42.50	Catalog No. 719-FL
Faro Straight Board	- - - - -	20.00	Catalog No. 381-F
Faro Case Keeper	- - - - -	11.50	Catalog No. 382-F
Faro Check Rack 2000 size	- - - - -	45.00	Catalog No. 383-M
Faro Marker Rack complete with markers	- - - - -	32.50	Catalog No. 384-F
Faro Dealing Box	- - - - -	12.00	Catalog No. 385-M
Rubberized Dust-Proof and Moisture-Proof Cover	- - - - -	42.00	Catalog No. 386-M
	- - - - -	7.50	Catalog No. 318-M

*5.25 Faro Marker Rack
(yellow) 42 markers
6.00*

“(For prices, refer to PRICE LIST in front of catalog)”

TAYLOR-MADE FARO TABLE



Taylor's Regulation Faro Table is standard in every respect, being 42x72x30 inches high. The top is padded and covered with a very high grade billiard cloth. Special drawers for currency, silver and other playing equipment are outstanding features of this table. Additional space is provided to the right of the dealer for the round front Faro Check Rack.

Faro Table padded and covered with billiard cloth including Faro layout mounted on board, Faro Case Keeper, Faro Dealing Box chromium plated, and 2000-size Faro Check Rack, marker rack, markers and Dustproof Cover.

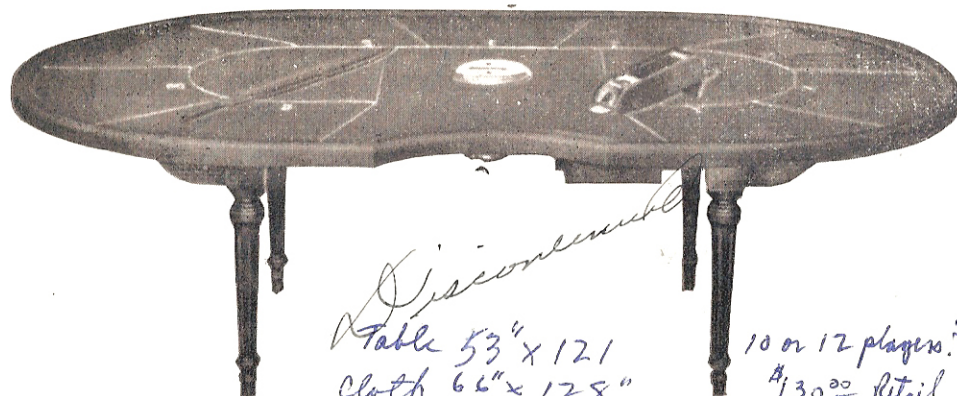
Faro Table padded and covered with billiard cloth	- - - - -	425 ⁰⁰	Catalog No. 379-F
Faro Layout, hand painted on Imported Simonis Cloth	- - - - -	275 ⁰⁰	Catalog No. 380-F
Faro Fold-up Board	- - - - -	42 ⁵⁰	Catalog No. 719-FL
Faro Straight Board	- - - - -	20 ⁰⁰	Catalog No. 381-F
Faro Case Keeper	- - - - -	11 ⁵⁰	Catalog No. 382-F
Faro Check Rack 2000 size	- - - - -	45 ⁰⁰	Catalog No. 383-M
Faro Marker Rack complete with markers	- - - - -	32 ⁵⁰	Catalog No. 384-F
Faro Dealing Box	- - - - -	12 ⁰⁰	Catalog No. 385-M
Rubberized Dust-Proof and Moisture-Proof Cover	- - - - -	42 ⁵⁰	Catalog No. 386-M
	- - - - -	7 ⁵⁰	Catalog No. 318-M

*5.25 Faro Marker Rack
(yellow) 42 markers*

"(For prices, refer to PRICE LIST in front of catalog)"

TAYLOR AND COMPANY — 4848 W. 25th STREET — Telephone LAWndale 1-6121 — CHICAGO 50, ILLINOIS

TAYLOR - MADE CHEMIN de FER EQUIPMENT



The standard table as illustrated is built according to official French specifications with turned legs and cut in for dealer. Genuine American Black Walnut. The top of the table is heavily padded and covered with a Chemin de Fer layout painted on Imported Simonis Cloth having playing space to accomodate nine players comfortably. The moulding around the table is covered with billiard cloth.

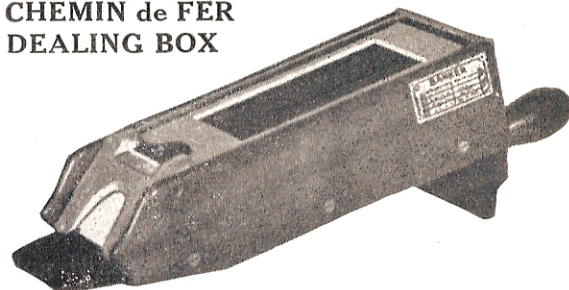
Complete outfit including Chemin de Fer table, layout, discard receiver, money drawer and take off slot, dealing box, palette, dustproof and moisture-proof cover **Cat. No. 387-F \$425.00**
 Chemin de Fer table only with padded top - - **Cat. No. 388-F \$275.00**
 Chemin de Fer Layout on Imported Simonis cloth, size 99" x 57" - - - - - **\$93.50 - Cat. No. 720-CDFL**



CHEMIN de FER PALETTE

This official design Palette is 36" in length, made of a light weight Spruce, finished in ebony, with a knife edge, which enables the dealer to handle all bets and cards efficiently **Cat. No. 389-F**

CHEMIN de FER DEALING BOX



This Regulation Dealing Box is made of Walnut. All metal parts are chrome finish. Capacity 6 decks of cards. The top is protected with a sliding metal cover. Chemin de Fer Dealing Box

37.00 Cat. No. 390-M

CHEMIN de FER DISCARD RECEIVER

The Receiver illustrated is 8" in diameter and 10" deep. Can be installed in any table.

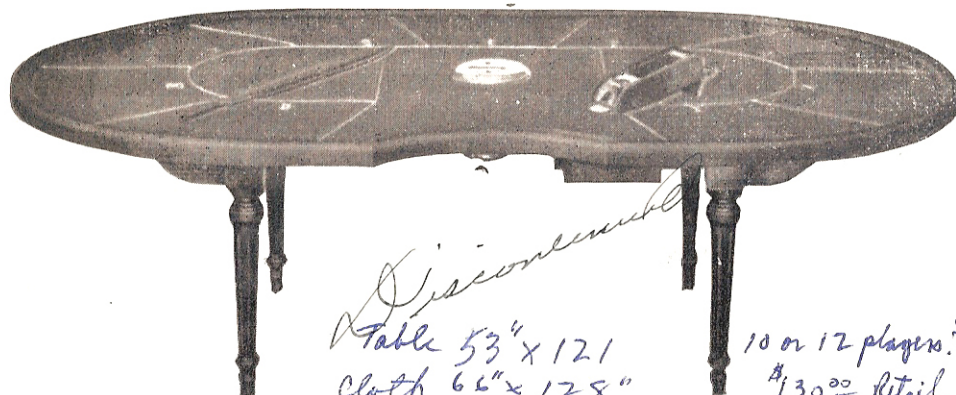
Cat. No. 391-M



(For prices see front of catalog) **30.00**

TAYLOR AND COMPANY — 4848 W. 25th STREET — Telephone LAwndale 1-6121 — CHICAGO 50, ILLINOIS

TAYLOR - MADE CHEMIN de FER EQUIPMENT



The standard table as illustrated is built according to official French specifications with turned legs and cut in for dealer. Genuine American Black Walnut. The top of the table is heavily padded and covered with a Chemin de Fer layout painted on Imported Simonis Cloth having playing space to accomodate nine players comfortably. The moulding around the table is covered with billiard cloth.

Complete outfit including Chemin de Fer table, layout, discard receiver, money drawer and take off slot, dealing

box, palette, dustproof and moisture-proof cover **Cat. No. 387-F 425⁰⁰**

Chemin de Fer table only with padded top - - **Cat. No. 388-F 275⁰⁰**

Chemin de Fer Layout on Imported Simonis cloth, size

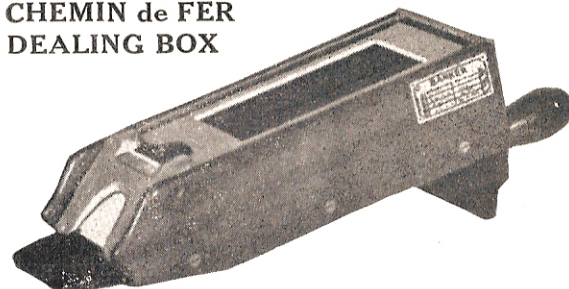
99" x 57" - - - - - **93.50** - **Cat. No. 720-CDFL**



CHEMIN de FER PALETTE

This official design Palette is 36" in length, made of a light weight Spruce, finished in ebony, with a knife edge, which enables the dealer to handle all bets and cards efficiently **7.50** **Catalog No. 389-F**

CHEMIN de FER DEALING BOX



This Regulation Dealing Box is made of Walnut. All metal parts are chrome finish. Capacity 6 decks of cards. The top is protected with a sliding metal cover. Chemin de Fer Dealing Box

37⁵⁰ Cat. No. 390-M

CHEMIN de FER DISCARD RECEIVER

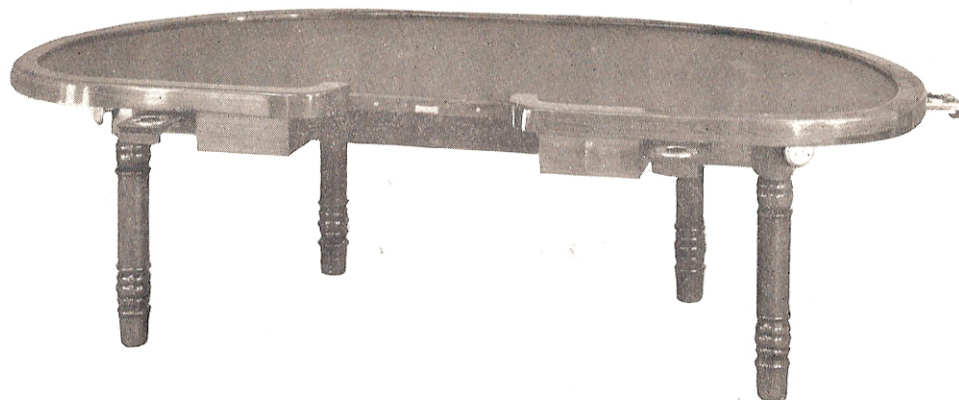
The Receiver illustrated is 8" in diameter and 10" deep. Can be installed in any table.

Cat. No. 391-M

(For prices see front of catalog) **30⁰⁰**



TAYLOR - MADE DE LUXE POKER TABLE



Taylor's De Luxe Poker Table is the conventional table for properly equipped casino rooms. Special features are individual disappearing ash trays, correct height, beautiful appearance and rigid construction. This table is one of the strongest and sturdiest tables ever manufactured. Clubroom owners and their patrons have found this to be the most satisfactory and convenient table. It is equipped with a rim $\frac{3}{4}$ " high which prevents cards from being dealt off the table, also provides added protection for stakes. Legs are artistically turned, beautifully finished to show the rich grain of the wood, fastened together with chromium hand screws permitting rapid knock-down or assembly. Top is made of selected plywood, is heavily padded and covered with green billiard cloth. Entire table is made in Black Walnut, equipped with bill slot, money drawer with lock and keys, extra compartment for cards and supplies. Chairs to match this table are illustrated on page 84. Table seats nine persons comfortably.

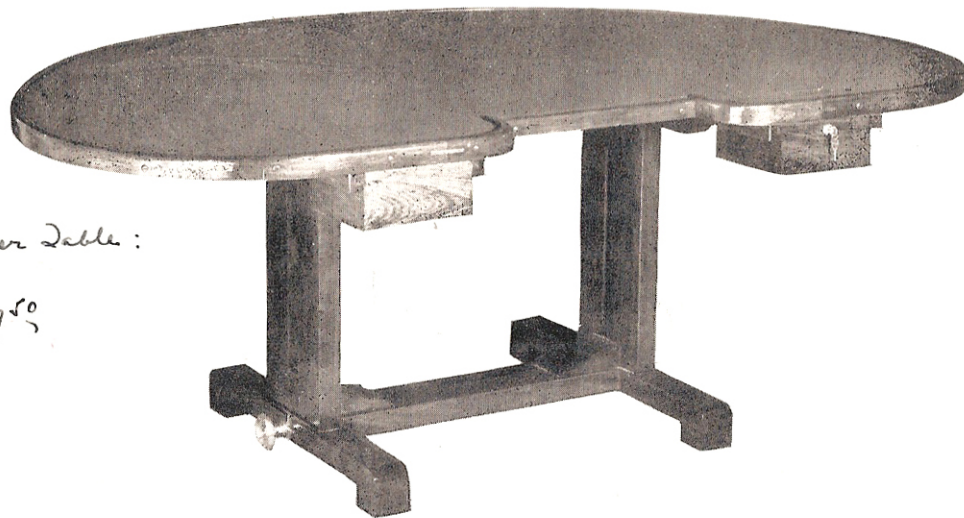
Taylor's De Luxe Poker Table, 30" high, 50" wide, 75" long	- - - - -	250 ⁰⁰	Catalog No. 392-F
Taylor's Rubberized Dust and Moisture Proof Cover	- - - - -	7 ⁵⁰	Catalog No. 322-M

"(For prices, refer to PRICE LIST in front of catalog)"

TAYLOR AND COMPANY — 4848 W. 25th STREET — Telephone LAWndale 1-6121 — CHICAGO 50, ILLINOIS

Poker Money Bag (cloth) @ 1.00 ea.
 " (leather) @ 2.50 ea. #71L

TAYLOR - MADE STANDARD POKER TABLE



Chicago Standard Poker Table:

No drawers } \$137.50
 Ironclad cloth }

Taylor's Standard Poker Table is featured at an exceptionally low cost and used extensively in the smaller casino rooms. This table has the same general features as Taylor's De Luxe Poker Table, walnut finish with a lasting lustre and is constructed to set solidly on the floor. Table legs are fastened with beautiful chromium hand screws for rapid assembly or knock-down. Table top is made of selected plywood, is heavily padded and covered with extra heavy green billiard cloth. Equipped with bill slot, money drawer with lock and keys, extra compartment for cards and supplies. Comfortably accomodates nine players and dealer.

Taylor's Standard Poker Table, 30" high, 47" wide, 80" long - - - - - 165.00 Catalog No. 393-F

Taylor's Rubberized Dust and Moisture Proof Cover - - - - - 7.50 Catalog No. 322-M

"(For prices, refer to PRICE LIST in front of catalog)"

TAYLOR AND COMPANY — 4848 W. 25th STREET — Telephone LAWndale 1-6121 — CHICAGO 50, ILLINOIS

TAYLOR - MADE DE LUXE BLACKJACK TABLE



Taylor's De Luxe Blackjack Table, **Genuine Black American Walnut**, a solidly constructed piece of equipment with beautifully turned legs and spreader, one piece curved rim installed with counter-sunk screws. Toes of table are at proper angle to afford players ample foot room. Complete table is fastened together with chromium hand screws, making it easy to assemble or take apart. Table top is made of selected plywood. Equipped with Taylor's special aluminum check tray with chutes slanted to keep checks in position for quick and convenient handling. Taylor's Regulation Blackjack Table complete with padded top, dyed layout, combination cast aluminum check tray, bill receiver, drawer with lock and keys, extra card compartment. When ordering state design of layout and number of betting spaces desired, refer to Pages 47 and 48. Complete - - - - **Catalog No. 394-F**

300.00

Shooken money Paddle @ 1.50

Special Design complete

"(For prices, refer to PRICE LIST in front of catalog)"

*Leay - Layout + Cover
+ 450.00*

TAYLOR AND COMPANY — 4848 W. 25th STREET — Telephone LAWndale 1-6121 — CHICAGO 50, ILLINOIS

*Black
Jacks*

TAYLOR-MADE STANDARD BLACKJACK TABLE



Taylor's Standard Blackjack Table is made on the same principle as the De Luxe Table as illustrated on page 77 carrying all the same features with the exception of having square legs and spreader. When ordering state design of layout and number of betting spaces desired. Refer to pages 47 and 48.

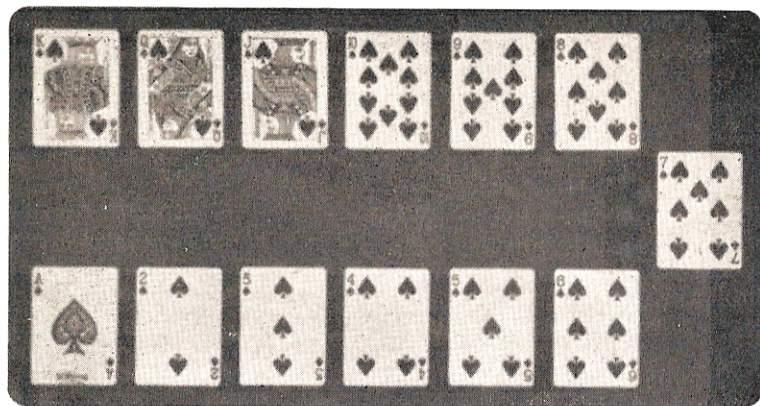
Complete - - 175⁰⁰ - - Catalog No. 395-F

Dust-Proof Cover 7⁵⁰ - - Catalog No. 314-M

"(For prices, refer to PRICE LIST in front of catalog)"

TAYLOR AND COMPANY — 4848 W. 25th STREET — Telephone LAWndale 1-6121 — CHICAGO 50, ILLINOIS

TAYLOR - MADE STUSS OUTFIT



STUSS LAYOUT

Taylor's layout with actual card faces mounted on panel board with heavy varnish finish to protect card faces.

Stuss Layout on Imported Simonis Green Cloth

^{42.50} Catalog No. 719-SL

Stuss Layout on Enamel Cloth ^{27.50} Catalog No. 719-SEL

Board for mounting above - ^{11.50} - Catalog No. 382-F

NOTE: Laydown money racks for stuss games can be made in any size desired. When ordering just state the amount of slots and money denominations wanted.

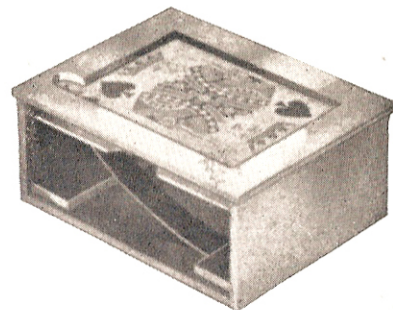
“(For prices, refer to PRICE LIST in front of catalog)”

STUSS BOX

Taylor's Stuss Box, standard size to show card index and to hold out last four cards.

Catalog No. 386M

^{42.50}



STUSS MONEY RACK



^{6 Hole} Taylor's Money Rack for halves, quarters and dollars. Made of Black Walnut.

Catalog No. 396-F ^{8.00}

^{10 Hole Laydown = 15.00}

TAYLOR AND COMPANY — 4848 W. 25th STREET — Telephone LAWndale 1-6121 — CHICAGO 50, ILLINOIS